

DOCUMENTED PLANT CHROMOSOME NUMBERS 70:1

CARL S. KEENER

*Department of Biology, The Pennsylvania State University
University Park, Pennsylvania 16802*

Figures 1-25 are camera lucida drawings.

CHENOPODIACEAE^a

CHENOPODIUM Section BOTRYOIDES C. A. Meyer

CHENOPODIUM BOTRYS L.^{b,c} (Fig. 1.) $2n=18$. ORE., Douglas Co.: *Wahl 21742* (PAC).

CHENOPODIUM GRAVEOLENS Willd. var. NEOMEXICANUM (Aellen) Aellen.^d (Fig. 2.) $2n=32$. ARIZ., Coconino Co.: *Wahl 21901* (PAC).

CHENOPODIUM Section DEGENIA Aellen

CHENOPODIUM CHENOPODIOIDES (L.) Aellen var. DEGENIANUM (Aellen) Aellen.^b (Fig. 3.) $2n=18$. CALIF., Tulare Co.: *Howell and True 43894* (PAC).

CHENOPODIUM MACROSPERMUM Hook. f. var. FARINOSUM (S. Wats.) J. T. Howell.^b (Fig. 4.) $2n=36$. CALIF., San Diego Co.: *Wahl 21776* (PAC).

CHENOPODIUM Section Chenopodia (C. A. Meyer) Aellen

CHENOPODIUM ALBUM L. var. ALBUM.^{b,c} (Fig. 5.) $2n=54$. PA., Lackawanna Co.: *Wahl 21669* (PAC).

CHENOPODIUM ALBUM L. var. LANCEOLATUM (Muhl.) Coss. & Germ.^d (Fig. 6.) $2n=54$. CANADA, ONTARIO, Nipissing Co.: *Wahl 19910* (PAC).

CHENOPODIUM ALBUM L. var. STEVENSII Aellen.^d (Fig. 7.) $2n=54$. CALIF., Los Angeles Co.: *Wahl 21750* (PAC).

CHENOPODIUM ATROVIRENS Rydb.^d (Fig. 8.) $2n=18$. NEW MEXICO, Catron Co.: *Wahl 21928* (PAC).

CHENOPODIUM BERLANDIERI Moq. var. SINUATUM (Murr) H. A. Wahl.^b (Fig. 9.) $2n=36$. CALIF., Ventura Co.: *Pollard s.n.* (PAC).

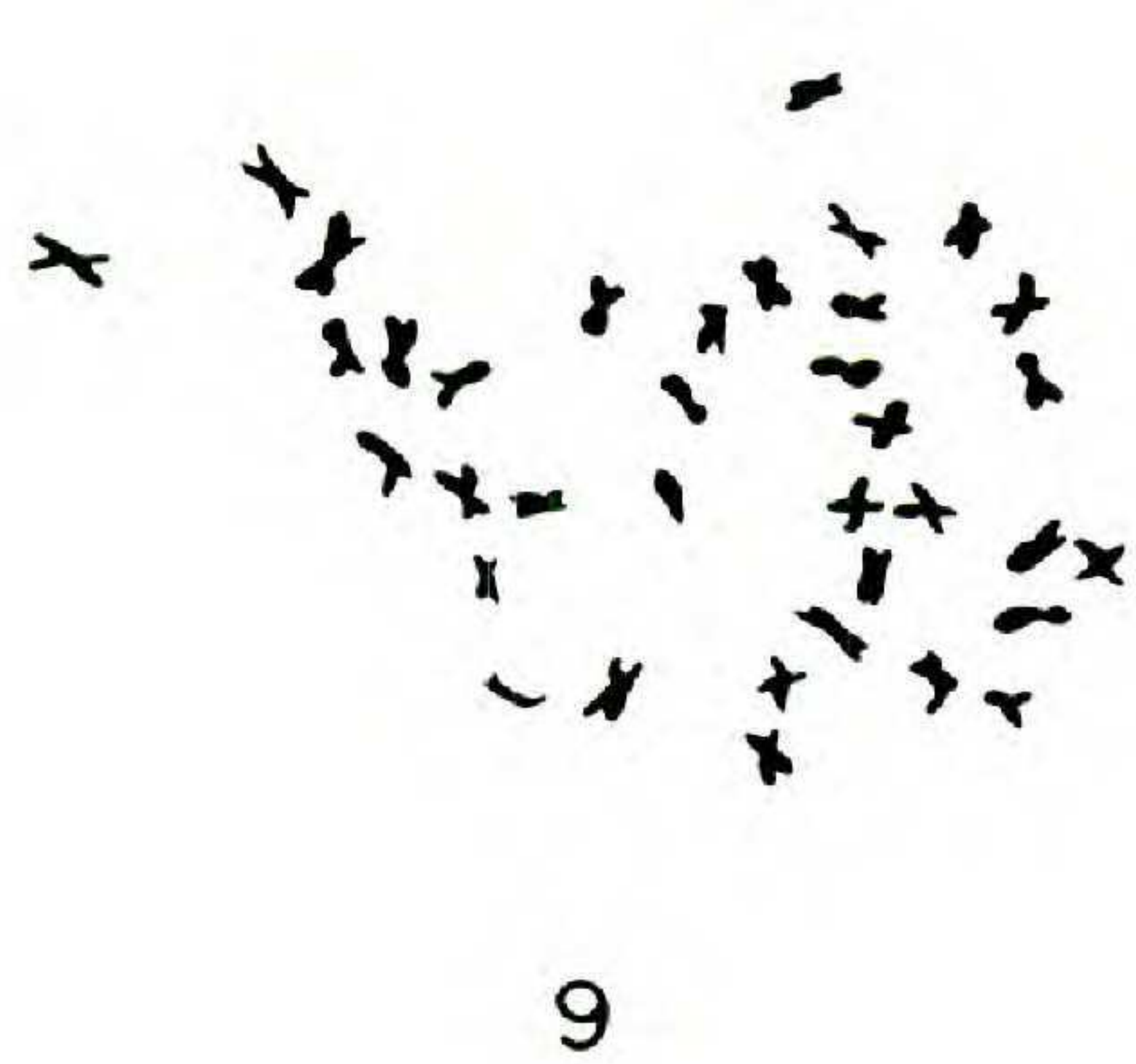
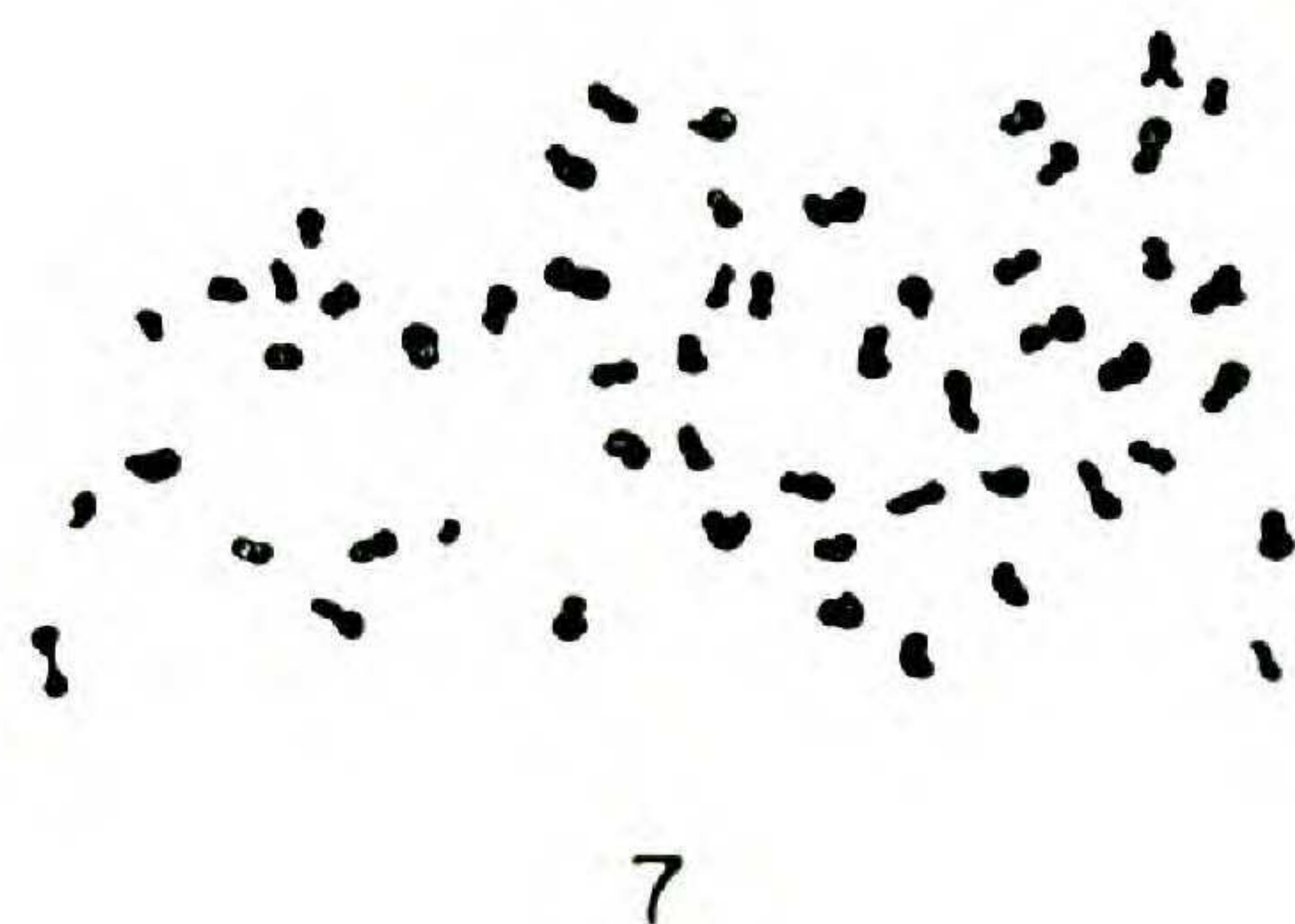
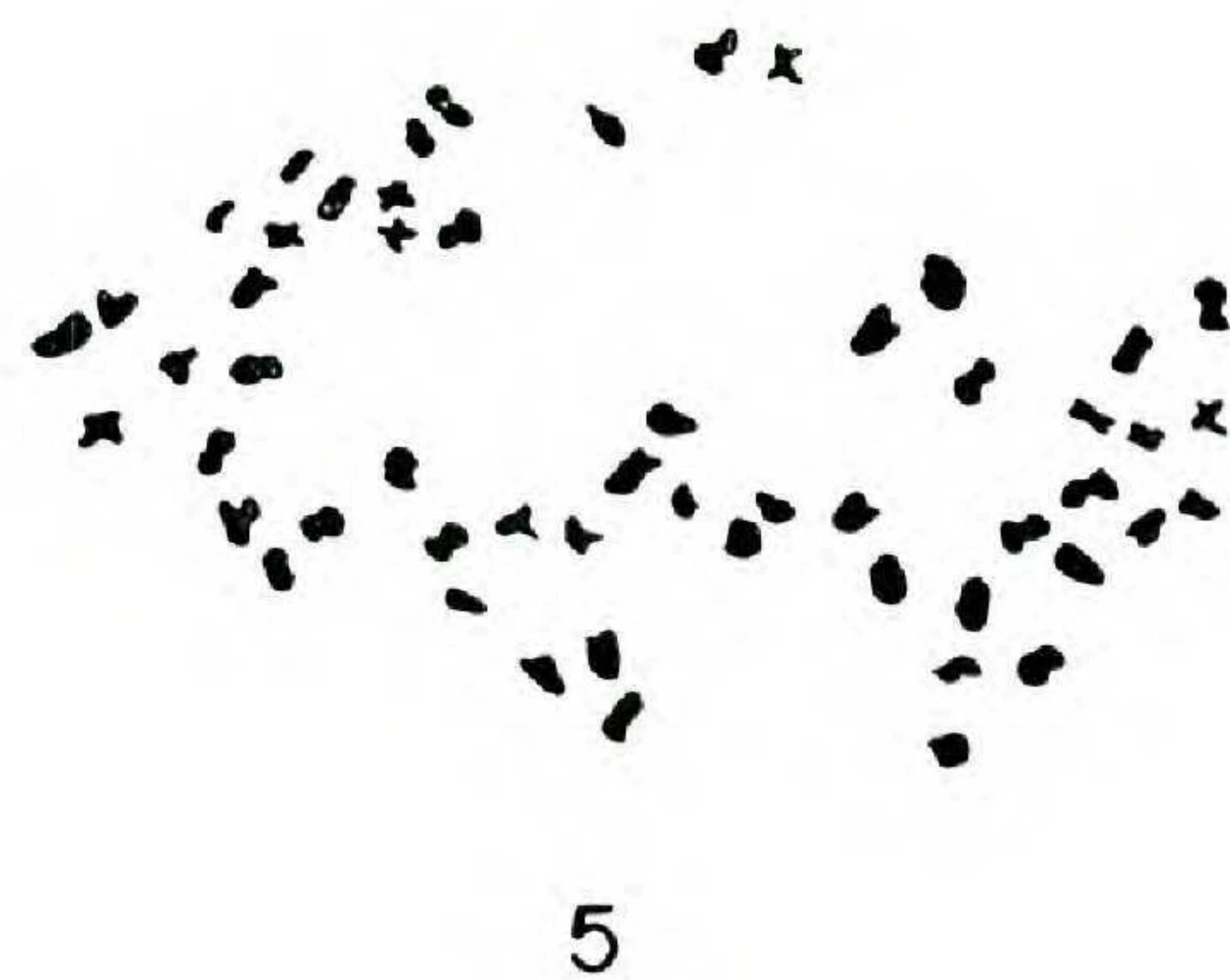
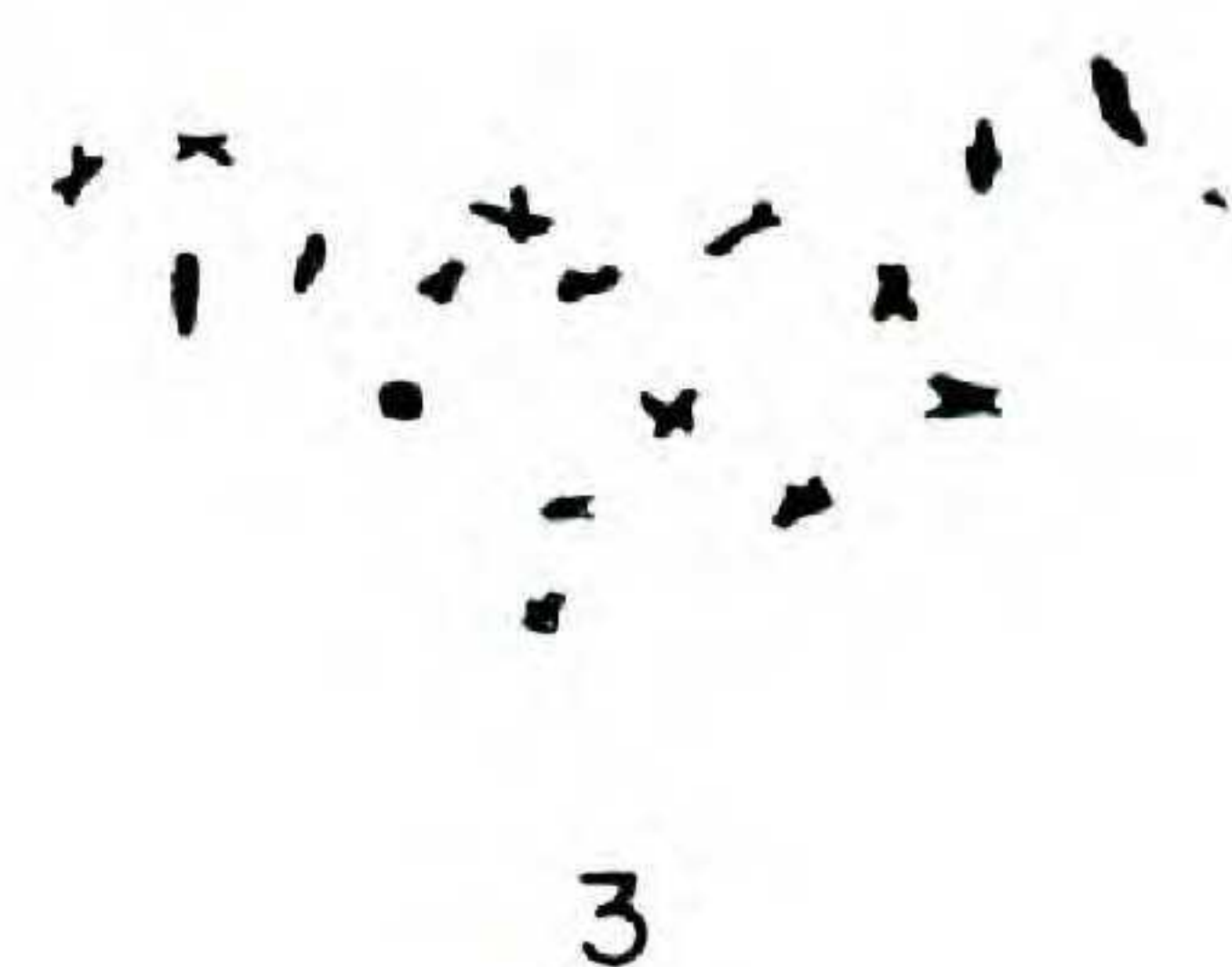
CHENOPODIUM BERLANDIERI Moq. var. BOSCIANUM (Moq.) H. A. Wahl.^d (Fig. 10.) $2n=36$. FLORIDA, Leon Co.: *R. A. Pursell s.n.* (PAC).

CHENOPODIUM BUSHIANUM Aellen.^c (Fig. 11.) $2n=36$. ARK., Sevier Co.: *Demaree 54626* (PAC).

CHENOPODIUM DESICCATUM A. Nelson var. DESICCATUM.^d (Fig. 12.) $2n=18$. CALIF., Kern Co.: *Wahl 21896* (PAC).

CHENOPODIUM DESICCATUM A. Nelson var. LEPTOPHYLLOIDES (Murr) H. A. Wahl.^{b,c} (Fig. 13.) $2n=18$. CALIF., Monterey Co.: *Twisselmann 8790* (PAC).

CHENOPODIUM FOGGII H. A. Wahl.^b (Fig. 14.) $2n=18$. CANADA, ONTARIO, Lambton Co.: *Gaiser 3383* (PAC).



- CHENOPODIUM FREMONTII S. Wats.^d (Fig. 15.) $2n=18$. ARIZ., Pima Co.: *Wahl 21823* (PAC).
- CHENOPODIUM HIANIS Standley.^d (Fig. 16.) $2n=18$. TEXAS, Jeff Davis Co.: *Wahl 21828* (PAC).
- CHENOPODIUM INCANUM (S. Wats.) A. A. Heller.^d (Fig. 17.) $2n=18$. TEXAS, Jeff Davis Co.: *Wahl 21827* (PAC).
- CHENOPODIUM INCOGNITUM H. A. Wahl.^d (Fig. 18.) $2n=18$. CALIF., Los Angeles Co.: *Wahl 21756* (PAC).
- CHENOPODIUM LEPTOPHYLLUM Nutt. ex Moq. in DC.^d (Fig. 19.) $2n=18$. CALIF., Los Angeles Co.: *Wahl 21757* (PAC).
- CHENOPODIUM MISSOURIENSE Aellen.^{b,c} (Fig. 20.) $2n=54$. ARK., Pike Co.: *Demaree 53160* (PAC).
- CHENOPODIUM NEOMEXICANUM Standley.^d (Fig. 21.) $2n=18$. ARIZ., Pima Co.: *Wahl 21826* (PAC).
- CHENOPODIUM STANDLEYANUM Aellen.^d (Fig. 22.) $2n=18$. ARK., Hot Springs Co.: *Demaree 56477* (PAC).
- CHENOPODIUM STRICTUM Roth var. STRICTUM.^c (Fig. 23.) $2n=36$. CALIF., Tulare Co.: *Wahl 21905* (PAC).
- CHENOPODIUM STRICTUM Roth var. GLAUCOPHYLLUM (Aellen) H. A. Wahl.^b (Fig. 24.) $2n=36$. CALIF., Tulare Co.: *Wahl 21904* (PAC).
- CHENOPODIUM WATSONII A. Nelson.^d (Fig. 25.) $2n=18$. NEW MEXICO, Catron Co.: *Wahl 21929* (PAC).

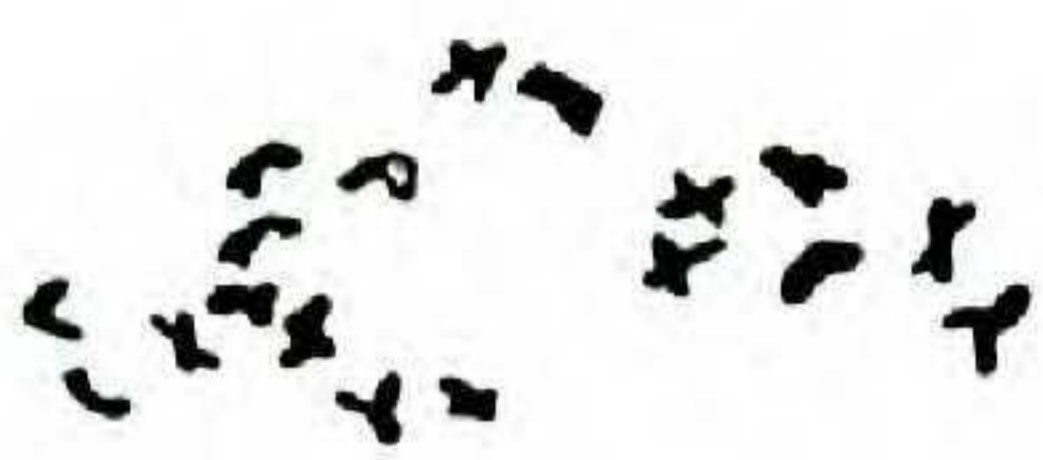
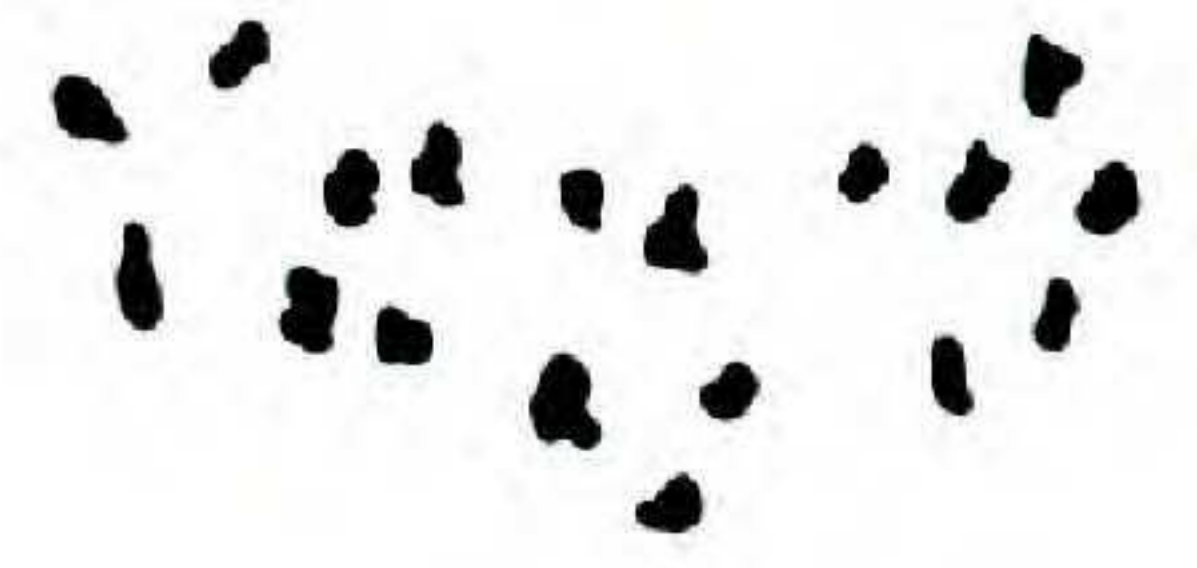
FOOTNOTES

^a All counts were made from root tips of seedlings raised from seed taken from the indicated voucher specimens.

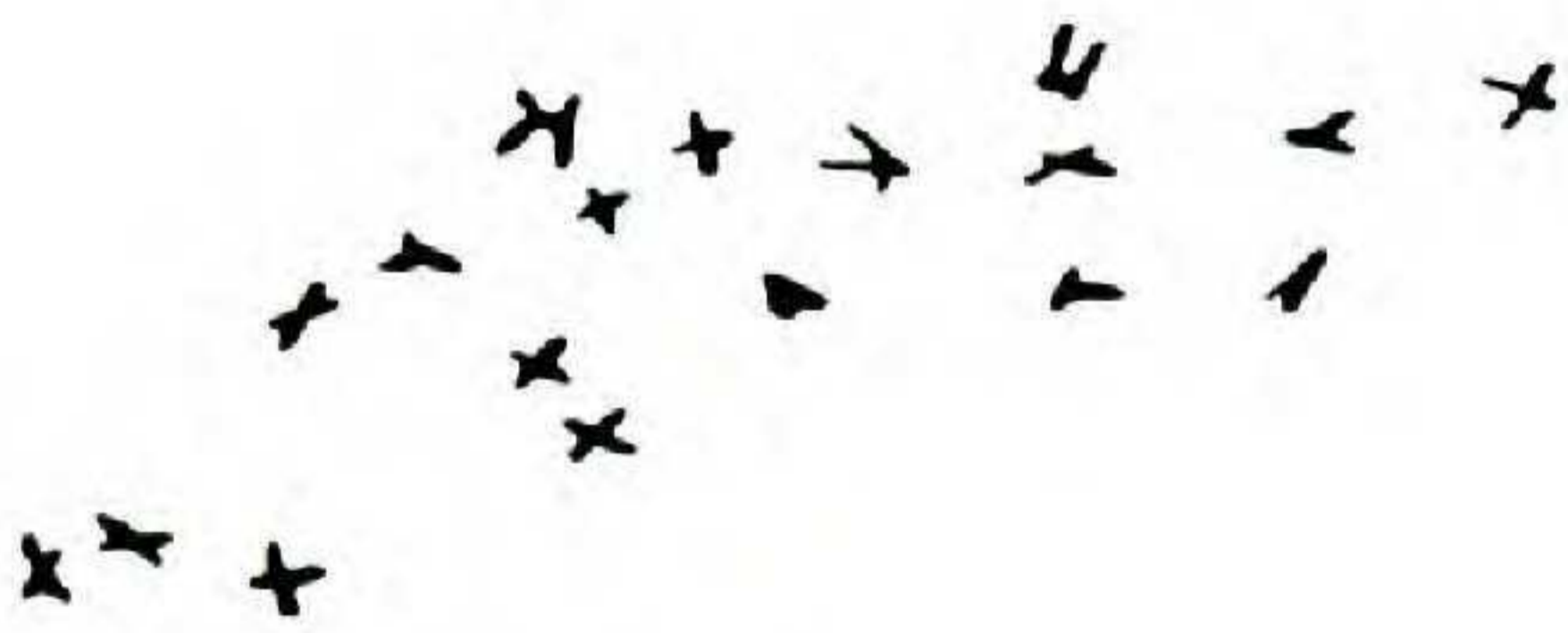
^b Taxon for which the same chromosome count has been published previously.

^c Taxon for which a chromosome count differing from this one has been published previously.

^d No chromosome number reported previously for this taxon.



15

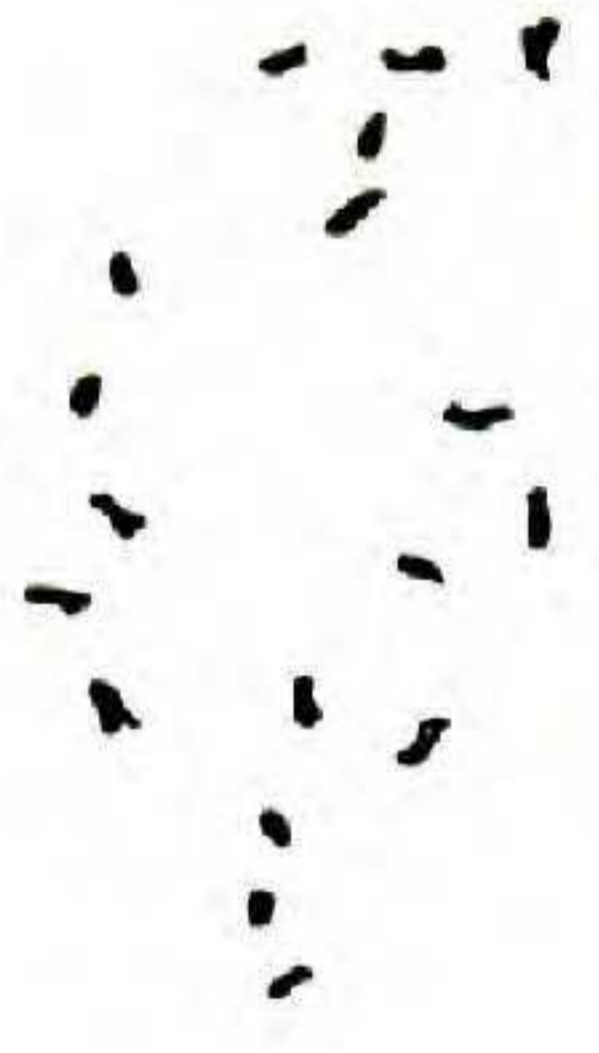


19

20



21



25

22

23

24

0.01 mm